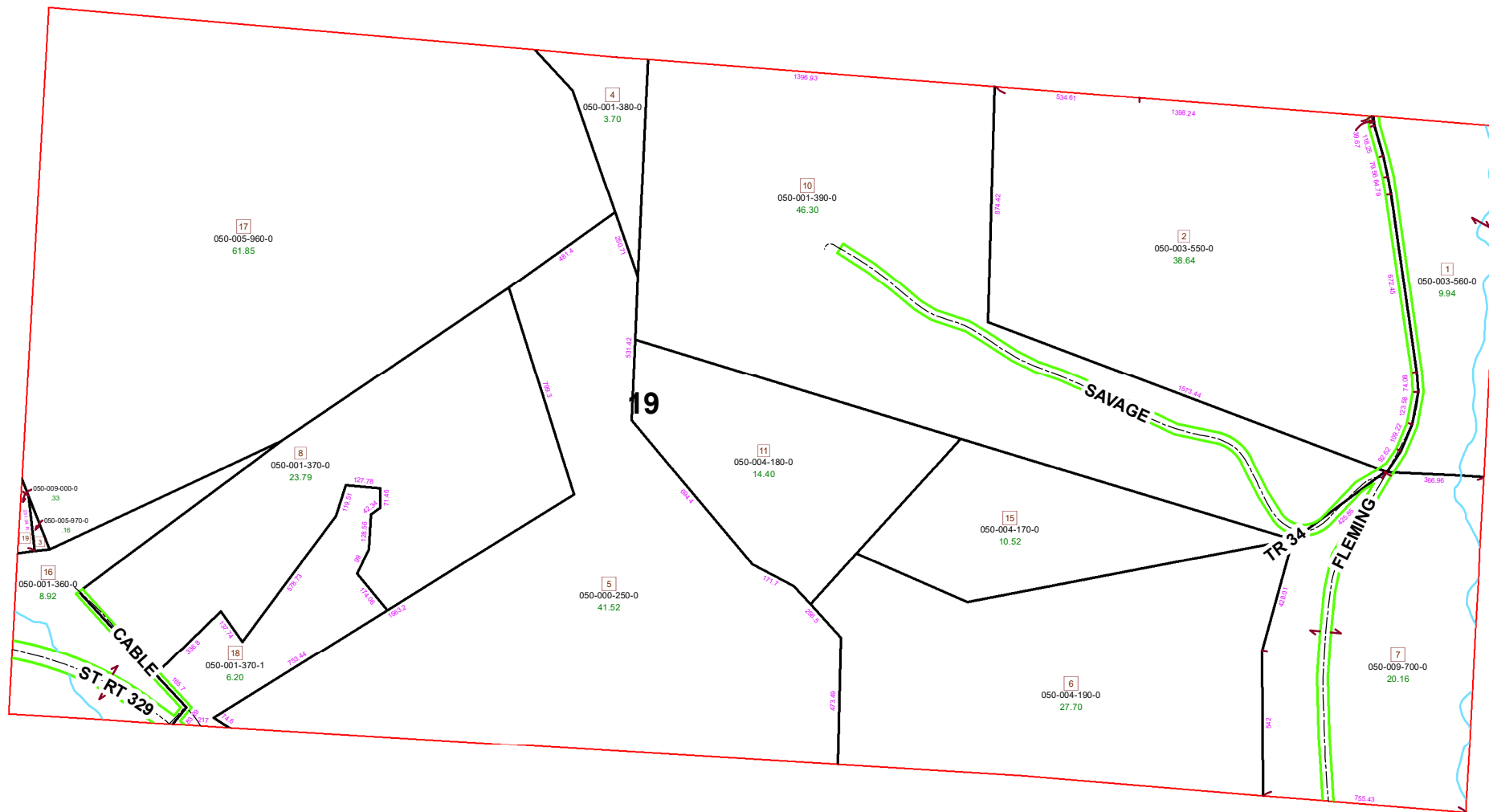
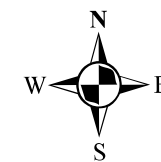


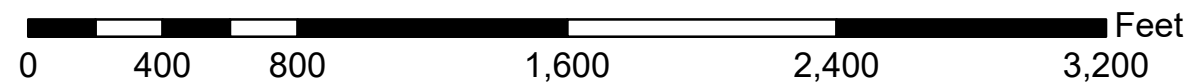
HOMER TOWNSHIP FRACTION 19 R13 TWP 7 MORGAN COUNTY, OH



PIN	VOL	PAGE	Owner	LegalDescr	Acre
050-001-370-1	OR27	221	CABLE CURTIS	R13 T07 S19 SD 18	6.205
050-001-360-0	OR223	3447	CABLE GEORGE ARTHUR	R13 T07 S00 FR 19 SD 16	8.92
050-001-370-0	OR223	3447	CABLE GEORGE ARTHUR	R13 T07 S00 FR 19 SD 08	23.79
050-003-550-0	OR136	527	CABLE GREGORY R & E MAXINE	R13 T07 S00 FR 19 SD 2 S	38.64
050-001-390-0	OR214	71	CABLE GREGORY R & E MAXINE	R13 T07 S00 FR 19 SD 10 S	46.3
050-001-380-0	OR214	71	CABLE GREGORY R & E MAXINE	R13 T07 S00 FR 19 SD 04 S	3.7
050-005-970-0	OR13	557	GROVE FRANK A JR & MARILYN	R13 T07 S00 FR 19 SD 3	0.16
050-005-960-0	OR13	557	GROVE FRANK A JR & MARILYN	R13 T07 S00 FR 19 SD 17	61.85
050-003-560-0	OR234	3417	HAZEN IDA J	R13 T07 S00 FR 19 SD 1	9.94
050-009-000-0	OR217	3297	HIXSON JASON M & TERESA L	R13 T09 S00 FR 19 SD 19 S	0.33
050-004-170-0	D.V 133	53	JUTTE RALPH B	R13 T07 S00 FR 19 SD 6	27.7
050-004-170-0	D.V 133	53	JUTTE RALPH B	R13 T07 S00 FR 19 SD 14-1	10.52
050-004-180-0	D.V 133	53	JUTTE RALPH B	R13 T07 S00 FR 19 SD 11	14.4
050-000-250-0	OR11	208	LEHMAN ROGER R & SANDRA S	R13 T07 S00 FR 19 SD 05 E	41.52
050-009-700-0	OR220	1362	WAGNER KEVIN S & KELLEEN	R13 T07 S00 FR 19 SD 7 EX	20.16



Boundaries	
----- Hidden	--- ROW
--- Hydro	--- Section
--- Roads	--- Lot
--- County	--- Township
--- Parcel	--- Parcels



Disclaimer: The information that these maps contains is for reference purposes only. Please bring any errors to the attention of the Engineer's Office staff.

Thank you